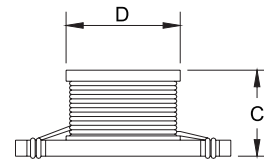
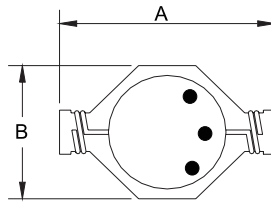


### HCD231608 TYPE

#### TYPE

#### HCD 231608



A: 22.3 MAX.  
B:15.3 MAX.  
C: 7.87 MAX.  
D: 12.7±0.3

#### SPECIFICATION

ITEM	L ( $\mu$ H)	DCR MAX( $\Omega$ )	SRF MIN(MHz)	IDC1 MAX(A)	IDC2 MAX(A)
HCD231608					
R78M	0.78±20%	2.6	156	30	15
1R5M	1.5±20%	4.0	100	25	15
2R2M	2.2±20%	6.1	75	20	12
3R3M	3.3±20%	8.6	60	17	10
3R9M	3.9±20%	10	55	15	9.0
4R7M	4.7±20%	14	40	13	8.4
6R0M	6.0±20%	17	35	12	7.5
7R8M	7.8±20%	18	35	11	7.5
100M	10±20%	26	28	10	6.0

J: ±5%, K: ±10%, M: ±20%

\* Hong can design any part to your requirements with different inductance.

\* All parameters as this content presented are subject to final specifications both sides confirmed.